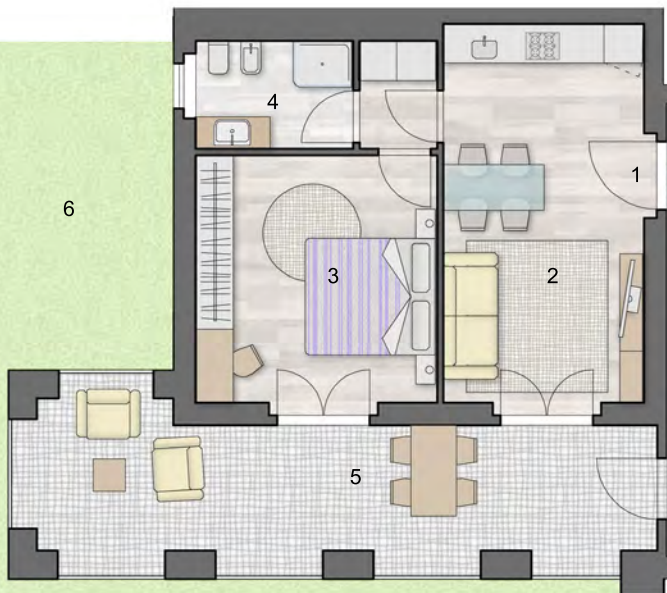


- 1\_ingresso
- 2\_soggiorno-pranzo 18,00 mq
- 3\_wc
- 4\_camera 14,00 mq
- 5\_loggia 25 mq
- 6\_giardino 105 mq



6

**Appartamento 2 piano terra, 47 mq**  
cantina 6,3 mq, posto auto 27 mq